

SEQUENCIA—  
**Bold / Regular / Light**  
*Italics* and Mono



Specimen  
Document  
2011

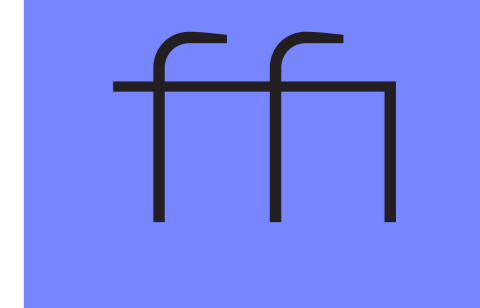
**Font Names:**  
 —Sequencia  
 —Sequencia Mono

**Styles:**  
 —Light  
 —Light Italic  
 —Regular  
 —Italic  
 —Bold  
 —Bold Italic

**Format:**  
 —OpenType  
 —Windows & OS X

**OT Features:**  
 —Ligatures  
 —Fractions  
 —Sups/Infs  
 —Capital Positioning  
 —Contextual Alts  
 —Arrows & Dingbats  
 —Stylistic Sets  
 —Old Style Numerals  
 —Alternate 'g'

**Languages:**  
 Afrikaans, Albanian, Asturian, Basque, Breton, Bosnian, Catalan, Cornish, Croatian, Czech, Danish, Dutch, English, Esperanto, Estonian, Faroese, Finnish, French, Galician, German, Greenlandic, Guarani, Hawaiian, Hungarian, Ibo, Icelandic, Indonesian, Irish, Gaelic, Italian, Kurdish, Latin, Latvian, Lithuanian, Livonian, Malagasy, Maltese, Maori, Moldavian, Norwegian, Occitan, Polish, Portuguese, Romanian, Romansch, Saami, Samoan, Scots, Slovak, Slovenian, Spanish, Swahili, Swedish, Tagalog, Turkish, Walloon, Welsh, Wolof



Cursive forms for italics include alterations to a, b, g, i and l.

Long ligatures like 'ff' are double spaced, meaning they take up exactly two mono spaces aiding legibility whilst maintaining that mono feel.

**Bd**

**Rg**

**Li**

**Bd It**

**Rg It**

**Li It**

**M Bd**

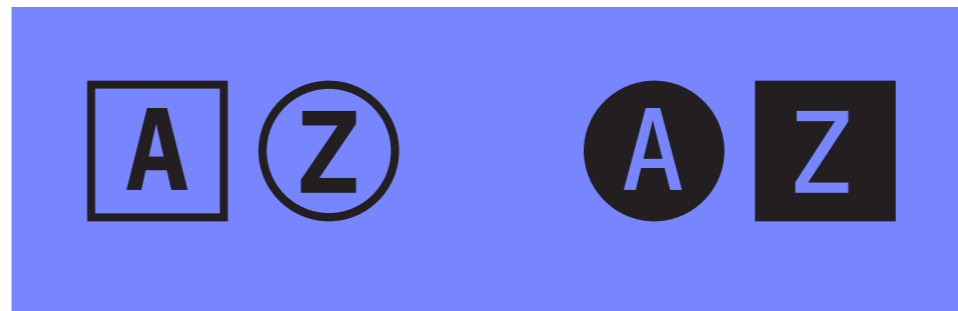
**M Rg**

**M Li**

**M Bd It**

**M Rg It**

**M Li It**



Map Markers from A-Z are available in four styles. They can be accessed by typing (A) or [A] and changed using stylistic sets. Alternatively, use the glyph palette.

The same options for A-Z markers are available for the numbers 1-10 and can be accessed in the same way.

Sequencia started life as a mono spaced typewriter font initially drawn in one weight. This weight was then refined through a series of tests eventually adding the two-storey 'g' and cursive forms for the italics.

Many features were then added to this basic mono font that distinguish it from other, similar products. One of these is the double-spaced Em dash. This ensures that the typographers favourite rule is still long, yet being the width of two mono characters, it lines up perfectly in tables and the mono-effect is retained.

Another unusual feature for a mono font is ligatures. Ligatures can ruin the mono effect, especially long ones like 'ffi'. Most mono fonts will have simple 'fi' ligatures, but when preceded by another 'f', you get some awkward spacing. To remedy this problem, Sequencia's 'ffi' ligature is

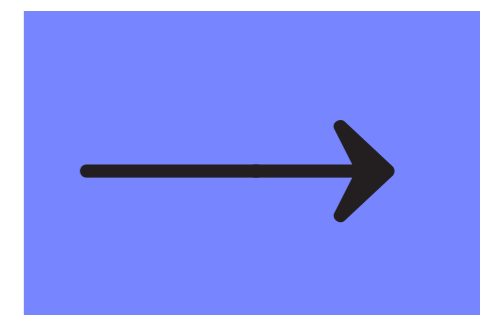
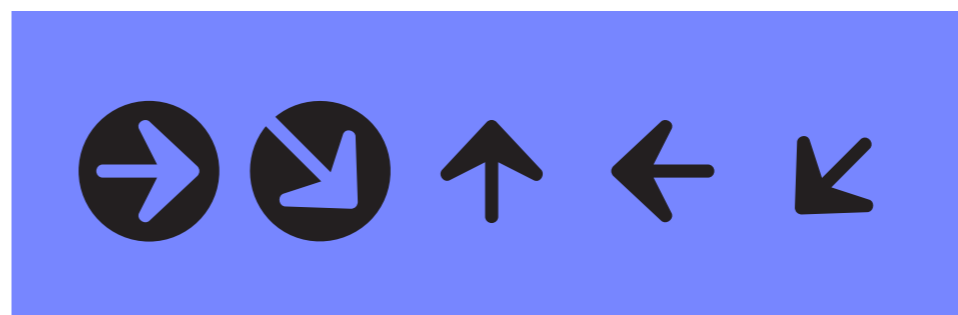
exactly the width of two mono characters. You could say that this font is not strictly mono, but rather "tabular". It all lines up perfectly, giving your digitally produced work a true mono feel, but by exploiting the flexibility of computerised word processing, it allows a more sophisticated typography.

OpenType features were also added, including Old Style Numerals with extensive currency symbols for both Lining and Old Style figures. Other figure styles include Scientific Superiors and Inferiors, Numerators and Denominators and Automated Fractions. Capital Positioning is available for some punctuation symbols, and can be accessed via the OpenType All Caps option.

As well as all this, there is also four variations of Map Markers from A-Z and 1-10. These are supplemented with a large collection

of arrows that can all be accessed via Contextual Alts and Stylistic Sets or with the Glyph Palette.

The font was expanded into three weights, Light, Regular and Bold, each with italics, and then expanded further into "proportional" non-mono versions. These were based on the mono fonts, but are not encumbered by width restrictions and are also fully kerned for easier reading. Sequencia's large x-height and generous spacing makes it ideal for use at small sizes whilst retaining an even colour.



The arrow set can be accessed via the glyph palette or by typing (>) or (->1) to (->28). The arrows work well for wayfinding and because the font is rather condensed, it is ideal for signage applications. 28 different arrows are included.

You can also create arrows of infinite length and any direction by typing <-> with as many hyphens as you need. This is controlled by contextual alts.

ABCDEFGHIJ  
 KLMNOPQRS  
 TUVWXYZ  
 abcdefgghij  
 klmnopqrs  
 tuvxyz  
 0123456789  
 .:?! &£\$@/

ABCDEFGHIJ  
 KLMNOPQRS  
 TUVWXYZ  
 abcdefgghij  
 klmnopqrs  
 tuvxyz  
 0123456789  
 .:?! &£\$@/

ABCDEFGHIJ  
 KLMNOPQRS  
 TUVWXYZ  
 abcdefgghij  
 klmnopqrs  
 tuvxyz  
 0123456789  
 .:?! &£\$@/



Old Style numerals are also included, best used in running text for dates or prices. They fit perfectly with the lowercase forms and are accessed via the OpenType ONUM feature.

Also included is an alternate 'g' for when the stylized two storey version is too flamboyant. Access via Stylistic Set 1 in upright forms only, not italics.









---

— Affichés —

**WAYFINDING**

*Exhibition Catalogue*

Arrivals ➔

BERLIN MARATHON

**Only €2.99**

Straße des 17. Juni

—  $3/4$  →  $3/4$  —

**AUTO-FRACTIONS**

**Upphafi því að**

$(x^9 = 8/7) m^3 - C_6$

Irritatingly Invisible Stuff

**Mountain Range**

BUZZZSAW

Appalachians

COUNTERINTUITIVE

**Groundwork**

Secure & Encrypted

SEQUENCIA—



New From  
HouseOfBurvo.co.uk

—  
Exclusively at  
Fonts.Gestalten.com